

**DEPARTMENT OF PSYCHIATRY's Communications Bulletin – March 24, 2009**

Today's issue includes the following items:

1. **Tri-University Symposium → MAY 13**
2. **Department of Psychiatry 24<sup>th</sup> Annual Research Day (\*new date!) → JUN 04**
3. **Photocopier Upgrade in Psychiatry Admin Office**
4. **Henry Angus and Buchanan PBX Maintenance → MAR 25 & 26**
5. **Seminar on Health of the Homeless: Out of the Shadows At Least? → ARP 21**
6. **Prizes in Health Disciplines → deadline: MAY 25 (attachment)**
7. **Plant Operations 2008 Customer Survey Results (Admin Heads Mailing List Message) (attachment)**
8. **Online Course in Eating Disorders - Laird Birmingham (attachment)**
9. **Department of Defence (DoD): FY09 Ovarian Cancer Research Program (OCRCP) → deadlines: MAY 08 & 22**
10. **NSERC: The Gerhard Herzberg Canada Gold Medal for Science & Engineering → deadline: MAY 01 (attachment)**
11. **UBC FoM: Post-Doctoral Fellow Professional Development Series Workshop → MAR 31 & APR 02 (attachment)**
12. **Canadian Breast Cancer Foundation (CBCF): BC/Yukon Region Community Grant Application – Call for Proposals → MAR 31**
13. **Natural Sciences & Engineering Research Council (NSERC): Collaborative Research and Training Experience (CREATE) Program → info session: MAR 24 (see attached)**

---

**1. TRI-UNIVERSITY SYMPOSIUM**

**May 13<sup>th</sup>, 2009**

UBC Department of Psychiatry will host a one day symposium at UBC to showcase research being done in the department and the international collaborate sites such as *Seoul National University* in Korea, the *Institute of Psychiatry* in Sao Paulo, Brazil, and at the *University of Porto Alegre* in Brazil.

The exact location and program details will be available in the near future.

[Back to Top](#)

---

## **2. DEPARTMENT OF PSYCHIATRY 24<sup>th</sup> ANNUAL RESEARCH DAY**

~~June 11<sup>th</sup>, 2009~~ → **June 04<sup>th</sup>, 2009**

**\*\*\* Please note that the date has been changed from June 11<sup>th</sup> to June 4<sup>th</sup>.**

Join your colleagues and trainees to hear about latest research being conducted at UBC.

There will be opportunities for oral and poster presentations. Present your best research work and get the award (A total of four Awards for best poster and best oral presentations will be available).

**Abstract submission deadline for trainees is **April 24<sup>th</sup>, 2009**.**

[Back to Top](#)

---

## **3. PHOTOCOPIER UPGRADE IN PSYCHIATRY ADMIN OFFICE**

In mid April, the department's administration office in Detwiller will be replacing the two aging photocopiers currently located in the admin office and the copy room. We will replace these with one newer, more efficient model with all the same capabilities that will be located in the copy room. Training sessions will be provided to anyone interested in attending one. Please contact Eniko Wilkie for details on training once the copier has arrived.

[Back to Top](#)

---

## **4. HENRY ANGUS AND BUCHANAN PBX MAINTENANCE**

## **March 25 & 26, 2009**

Maintenance will be performed on part of the UBC Point Grey campus telephone system on Wednesday, March 25th and Thursday March 26, 2009 between 21:00 (9:00 PM) and 23:59 (11:59 PM) Pacific Time on both days. Due to the nature of the maintenance being performed, there is the potential for an outage of up to 15 minutes duration for the campus telephone system. While we do not anticipate any loss of service, should an outage occur campus phones would experience a loss of dial tone while off campus callers would hear a “fast busy” tone while attempting to call a UBC Point Grey campus phone number. Voice Mail would also be affected. We regret any inconvenience to customers should a service interruption occur.

[Back to Top](#)

---

## **5. SEMINAR ON HEALTH OF THE HOMELESS**

### **April 21, 2009**

A free one day seminar will be held on Tuesday, April 21<sup>st</sup>, 2009.

Title: **Health of the Homeless: Out of the Shadows At Least?**

For details and registration please contact **Kirsten Marchand**:

[kmarchand@mail.cheos.ubc.ca](mailto:kmarchand@mail.cheos.ubc.ca)  
604-682-2344 ext 62942

[Back to Top](#)

---

## **6. PRIZES IN HEALTH DISCIPLINES (see attached)**

The College of Health Disciplines at UBC is calling for nominations for the following:

- 1) The John F. McCreary Prize for Inter-professional Teamwork: for the best example of an inter-professional health care initiative in the Province of BC. To recognize creative inter-professional teamwork leading to improved patient care.
- 2) BC Health Association Legacy Award: for an individual or group who has made a significant contribution to the development of health policy, health leadership or healthcare governance Province-wide. **Deadline is May 25, 2009**. Details and nomination forms are attached.

[Back to Top](#)

---

## **7. PLANT OPERATIONS 2008 CUSTOMER SURVEY RESULTS (Admin Heads Mailing List Message) (see attached)**

*The following message is being sent to Deans, Directors and Administrative Heads of Units from John Metras, Director - UBC Plant Operations.*

Thank you for your participation in the 2008 Plant Operations Client Satisfaction Survey. Attached are the survey results including a comparison with results from previous years.

We are encouraged by the satisfaction rating improvements in several areas including Building Operations & Maintenance where we have been focusing attention on improving service response time and communication. We do recognize however that further work is required to fully meet your expectations.

One specific focus for us in the coming year will be to address your concerns over the cost of renovation projects. The following are a few measures that are planned or underway in this area:

- Project management fees, which are calculated on a sliding % scale based on project value, will continue to be charged at no higher than local market rates.
- Design fees will be charged at no higher than the applicable Architectural Institute of BC tariff rate.
- Trades charge-out rates will be adjusted starting in 2010 to eliminate the across-the-board \$65/hour rate for all trades and establish individual charge-out rates for each specific trade. This will result in lower rates for architectural trades (carpenters, painters) which should help to reduce costs for minor office renovation and painting work. In all cases, the new trade rates will be no higher than local market rates.

We are committed to providing you with the best possible services at costs that are competitive with external service providers. Your input provides a valuable guide for our on-going improvement efforts.

Thank you again for your continued participation in our annual survey.

**John Metras**, P.Eng., MBA  
Director  
UBC Plant Operations  
University of British Columbia  
2329 West Mall, Vancouver, B.C. V6T 1Z4  
Tel: 604-822-4311 Fax: 604-822-0208  
E-mail: john.metras@ubc.ca

Web: [www.plantoperations.ubc.ca](http://www.plantoperations.ubc.ca)

[Back to Top](#)

---

## 8. ONLINE COURSE IN EATING DISORDERS - Laird Birmingham (see attached)

**NEW! January 2009**

Eating Disorders and Disordered Eating: Prevention and Recovery

The course is a nine month online course designed to offer specialized training for a range of healthcare professionals including: Dietitians, Mental Health Workers, Nurses, Pastoral Care, Pharmacists, Physicians, Psychiatrists, Psychologists, Recreation Therapists, Researchers/Students, and Social Workers/Family Therapists

The course content includes:

- Prevention of disordered eating
- Health, physical exercise and nutrition
- Medical Perspective;
  - Definitions and epidemiology
  - Behavioural disorders
  - History, examination, and investigations
  - Medical Manifestations by system
  - The clinician's response to common physical complaints
- Treatment
  - Principles of treatment
  - Medical and nutritional therapy
  - Specific patient populations
  - Prepubertal children and younger adolescents
- The Psychiatric and Psychological Perspective
- Physical disease and mental illness
- Psychopathology and the mental status examination

- Psychopathology and phenomenology
- Specific psychological therapies
- Areas of Special Interest

The Role of the General Practitioner  
Nursing patients with anorexia nervosa  
The role of the Dietitian

- Information for family and friends

For general information about this certificate course contact Maria Cordeiro at: cordeirom@douglas.bc.ca or call 604 777-6527

[Back to Top](#)

---

## **9. DEPARTMENT OF DEFENCE (DoD): FY09 OVARIAN CANCER RESEARCH PROGRAM (OCRP)**

The new OCRP Ovarian Cancer Academy Award is intended to develop a unique, interactive virtual academy that will provide intensive mentoring, national networking, and a peer group for junior faculty. The overarching goal of the Ovarian Cancer Academy is to develop successful, highly productive ovarian cancer researchers in a collaborative and interactive research training environment. The Ovarian Cancer Academy will be a virtual career development and research training platform consisting of up to five (5) Early-Career Investigator/Designated Mentor pairs from different institutions and one Academy Dean.

### **Submission Deadlines:**

#### Ovarian Cancer Academy Awards:

- Pre-Application (Letter of Intent) through <http://cdmrp.org/> required and due: **May 8, 2009**; 5:00 p.m. Eastern Time.
- Application submitted through <http://www.grants.gov/> due **May 22, 2009**; 11:59 p.m. Eastern Time.

Ovarian Cancer Research Program \$20 Million (the fourth of four funding mechanisms is offered: **Ovarian Cancer Academy Awards**).

Program Announcement and Application Instructions:  
<http://cdmrp.army.mil/funding/ocrp.htm>.

Synopsis Table: <http://cdmrp.army.mil/funding/pdf/09ocrpreftable.pdf> , page 4.

Detailed descriptions can be found in the program announcements, which are available on the Grants.gov website (<<http://www.grants.gov>>), the CDMRP website (<<http://cdmrp.army.mil/funding/arp.htm>>) and the CDMRP eReceipt Website (<https://cdmrp.org>).

Proposals must be submitted through the Federal Government's single entry portal, Grants.gov. Pre-applications are required and must be submitted through the CDMRP eReceipt website, <<https://cdmrp.org>>, prior to proposal submission to Grants.gov.

A listing of all USAMRMC funding opportunities can be obtained on the Grants.gov website by performing a basic search using CFDA Number 12.420.

[Back to Top](#)

---

## **10. NSERC: The Gerhard Herzberg Canada Gold Medal for Science & Engineering** (see attached)

**Nomination Deadline: May 1, 2009**

### About the Award

The NSERC Herzberg Medal, the Council's highest honour, recognizes research contributions characterized by both excellence and influence – two qualities that defined Dr. Herzberg's illustrious career. It is awarded annually to an individual who has demonstrated sustained excellence and influence in research, for a body of work conducted in Canada that has substantially advanced the natural sciences or engineering fields.

### NSERC's objectives

The award is meant to celebrate Canada's most outstanding scientists and engineers and to raise public awareness about the major contributions that Canada's top researchers make to international science and technology, and to bettering people's lives.

### The NSERC Herzberg Medal

In honour of the late Dr. Gerhard Herzberg, Canada's 1971 Nobel Prize winner in Chemistry, NSERC has dedicated its highest award to his memory.

In addition to the medal, the winner is guaranteed \$1 million to use for personal university-based research or to direct in some related way such as the establishment of research scholarships, fellowships or chairs in his or her name at Canadian universities. The monetary award will be distributed over a five-year period.

If the winner already has an NSERC Discovery Grant, that grant will be increased to \$200,000 for each of the five years. If the grant is currently greater than \$150,000, it will be topped up by \$50,000.

A winner who is not an NSERC Discovery Grant recipient may direct the full \$200,000 to university research endeavours such as scholarships.

The winner of the NSERC Herzberg Medal will be selected from three finalists. The other two finalists will each receive a \$50,000 grant, which can be applied to their university research or to the establishment of research scholarships, fellowships or chairs at Canadian universities. All first-time finalists will also receive the NSERC Award of Excellence.

For further information please see attached and/or visit their website at [www.nserc-crsng.gc.ca/en/herzberg](http://www.nserc-crsng.gc.ca/en/herzberg)

[Back to Top](#)

---

## **11. UBC FoM: POST-DOCTORAL FELLOW PROFESSIONAL DEVELOPMENT SERIES WORKSHOP (see attached)**

**March 31 & April 2**

*Survival Skills for Post Docs: The People Side of Achieving Success:*

*Part 1: Creative Approaches to Conflict (March 31)*

*Part 2: Collaboration and Courage (April 2)*

**Date:** **Tuesday, March 31 and Thursday, April 2, 2009**  
**Time:** 8:30 AM to 12:00 PM on both days  
**Location:** Michael Smith Laboratories  
#101 – 2185 East Mall  
Vancouver, BC

Please RSVP to [khaller@medd.med.ubc.ca](mailto:khaller@medd.med.ubc.ca) by **Friday, March 27**.

[Back to Top](#)

---



## **12. THE CANADIAN BREAST CANCER FOUNDATION (CBCF): BC/Yukon Region Community Grant Application – Call for Proposals**

**Deadline: March 31, 2009**

The Canadian Breast Cancer Foundation, BC/Yukon Region is pleased to announce that we are now accepting applications to our community grant program. Eligible groups and organizations are invited to submit proposals for projects initiatives through BC and the Yukon, that respond to local and provincial breast cancer and breast health needs. Grants provided through the community grant program are intended to support projects that fulfill the mission and objectives of CBCF in the areas of health promotion, education and awareness.

Please visit their website at [http://www.cbcf.org/en-US/BC%20Yukon/Funding/Community%20Funding%20\(1\).aspx](http://www.cbcf.org/en-US/BC%20Yukon/Funding/Community%20Funding%20(1).aspx) for further information.

For more information please contact Haifa Staiti, Manager of Grant Allocations, at 604-683-2873 or [hstaiti@cbcfc.org](mailto:hstaiti@cbcfc.org)

[Back to Top](#)

---

## **13. NATURAL SCIENCES & ENGINEERING RESEARCH COUNCIL (NSERC): Collaborative Research and Training Experience (CREATE) Program (see attached)**

**NOI UBC internal deadline: April 20, 2009**

**LOI NSERC deadline: May 15, 2009**

**Information Session** (attached flyer)

**Date: Tuesday, March 24, 2009**

**Time: 12:00 PM to 1:30 PM**

**Location: BC Gas Conference Room (Room 742)  
7<sup>th</sup> Floor, Koerner Library Bldg**

**To register for the Information Session please email [Alison.ariss@ors.ubc.ca](mailto:Alison.ariss@ors.ubc.ca) by March 22.**

We are very pleased to announce that NSERC is once again offering the Collaborative Research and Training Experience (CREATE) Program. Funding of up to \$1,650,000 will be provided by NSERC for a total period of six years.

The purpose of the CREATE Program is to support the training of teams of outstanding students and postdoctoral fellows from Canada and abroad through the development of innovative training programs that encourage collaborative and integrative approaches, and address significant scientific challenges associated to Canada's research priorities, and facilitate the transition of new researchers from trainees to productive employees in the Canadian workforce. Please see

[http://www.nserc-crsng.gc.ca/Professors-Professeurs/Grants-Subs/CREATE-FONCE\\_R\\_eng.asp](http://www.nserc-crsng.gc.ca/Professors-Professeurs/Grants-Subs/CREATE-FONCE_R_eng.asp)

This is the second offering of CREATE from NSERC, and the 2008 results are pending. For the last competition UBC was allowed to forward only 4 Letters of Intent.

The Program Officer at NSERC has advised us that NSERC's deadline for the LOI's would now be moved to May 15 and that their website will be updated next Monday (March 16th) with this information. NSERC will also inform us next week as to how many LOI's UBC will be able to submit.

A UBC Review & Selection Committee is presently being formed to select the LOI's to be forwarded by UBC to NSERC. We shall require an abridged NOI from those who plan to submit to CREATE. Our internal deadline for the NOI's is Monday April 20, 4:00 PM.

Please submit your CREATE abridged NOI to Alison Ariss at ORS, #102-6190 Agronomy Road (TEF III Building) on or before the internal deadline .You can also submit it electronically as an attachment to "Ariss, Alison" <Alison.Ariss@ors.ubc.ca>

The abridged NOI for internal review must be composed of:

NSERC Form 187 Notification of Intent

NSERC Form 100 for the applicant and up to five of the co-applicants.

Two additional pages of text to address the main points of the program mainly:

Merit of the proposed training program

Excellence of the researchers

Program management and long-term sustainability

--

Dr. Rabab K. Ward

Professor, Electrical and Computer Engineering, and Natural Sciences and Engineering  
Research Coordinator OFFICE of the VICE PRESIDENT RESEARCH

University of British Columbia  
c/o The Fred Kaiser Building  
5500 - 2332 Main Mall  
Vancouver, British Columbia V6T 1Z4  
CANADA  
Phone: 604-822-9428  
Fax: 604-822-9013

[Back to Top](#)

---



OFFICE OF THE VP ACADEMIC AND PROVOST	
MAR 12 2009	
ACTION: _____	FYI: _____
respond _____	advise _____
draft _____	other _____



college of  
**Health Disciplines**

#400 - 2194 Health Sciences Mall  
Vancouver, B.C. Canada V6T 1Z3

Tel: 604.822.5571 | Fax: 604.822.2495  
www.chd.ubc.ca

March 9, 2009

**CALL FOR NOMINATIONS**

The College of Health Disciplines at UBC is calling for nominations for the following:

**John F. McCreary Prize for Interprofessional Teamwork**

This prize is awarded each year for the best example of an interprofessional health care initiative in the Province of British Columbia. This initiative must demonstrate innovative cooperation between three or more health care disciplines. The intent of this award is to recognize creative interprofessional teamwork leading to improved patient care.

**British Columbia Health Association Legacy Award**

This award will be given to an individual or group who has made a significant contribution to the development of health policy, health leadership or health care governance province-wide. A UBC student, staff or faculty member, or an individual or group independent of UBC may be nominated.

Please find attached the description and criteria for the **John F. McCreary Prize**, and the **BC Health Association Legacy Award**. We would be most appreciative if you would bring this information to the attention of the appropriate people in your institution. As well, if you have an in-house publication in which you advertise upcoming events, please include information on these awards.

The nomination deadline is **May 25, 2009**. The winners will be announced in August. The John F. McCreary Prize will be presented to the award recipient at the Health Care Team Challenge event on October 1<sup>st</sup>, 2009 at the UBC Student Union Building.

On behalf of the Interprofessional Activities Committee of the College, we would like to thank you for your assistance in publicizing these awards.

Sincerely,

Louise Nasmith, MDCM, MEd, CCFP, FCFP  
Principal

Attachments: McCreary Prize 2009 criteria  
BCHA Legacy Award 2009 criteria



# 2009 JOHN F. MCCREARY PRIZE FOR INTERPROFESSIONAL TEAMWORK



## WHAT IS THE JOHN F. MCCREARY PRIZE FOR INTERPROFESSIONAL TEAMWORK?

The John F. McCreary Prize recognizes and promotes interprofessional teamwork in the health and human service professions. The award is named after Dr. John F. McCreary, the first Coordinator of Health Sciences at the University of British Columbia. It is intended to draw attention to Dr. McCreary's vision of interprofessional collaboration in clinical work and education and the value of a team approach in meeting the health care needs of British Columbians.

The 2008 McCreary Prize was awarded to  
Outreach Urban Health Primary Care Facility, Kelowna, B.C.

The 2009 John F. McCreary Prize consists of \$1,500 and will be presented to the representative of a group/ hospital/ organization. Travel to and from Vancouver to accept the award will be provided.

## WHO IS ELIGIBLE FOR THE MCCREARY PRIZE?

The criteria for eligibility are:

- (1) a nominee must be involved in the provision of health care in British Columbia;
- (2) the activities forming the basis for the nomination must reflect the cooperation of three or more health or human service disciplines in a manner that demonstrates innovation or excellence, or both; and
- (3) the activities must demonstrate creative teamwork leading to improved patient care.

Previous nominees can be re-nominated. Groups of individuals, as well as organizations involved in all areas of health care in British Columbia, can be nominated. The prize can be awarded on the basis of clinical and/ or educational teamwork. For example, a foundation or hospital could be nominated for exemplary activities that reflect an interprofessional philosophy. Likewise, a group of practitioners could be nominated for devising new interprofessional approaches that improve the delivery of health care services. New initiatives are welcome.

## WHAT IS THE DEADLINE FOR SUBMISSION OF NOMINATIONS?

The deadline for submission of nominations is **Noon, Monday, May 25, 2009**  
(Note: late submissions will not be accepted).

## WHEN WILL THE MCCREARY PRIZE BE ANNOUNCED?

The award recipient will be announced in August. The prize will be presented to the award recipient at the Health Care Team Challenge event on October 1<sup>st</sup>, 2009, at UBC in the Student Union Building.

## HOW TO SUBMIT A NOMINATION

Please ensure that the name of project(s) and nominee(s) are clearly stated.

ONLINE: Complete a nomination form online at <http://www.chd.ubc.ca/awards>

E-MAIL: E-mail completed nomination form(s) to: [chd@interchange.ubc.ca](mailto:chd@interchange.ubc.ca)

FAX: Fax completed nomination form to: (604) 822-2495.

MAIL: Mail completed nomination form (available on-line or attached here) to:

Chair, Awards Committee  
College of Health Disciplines, UBC  
#400 - 2194 Health Sciences Mall  
Vancouver, BC V6T 1Z3

Note: Please do not submit attachments, i.e.: DVD's, brochures, binders, reports, etc, as these will not be reviewed.



2009  
JOHN F. MCCREARY PRIZE  
FOR INTERPROFESSIONAL TEAMWORK



Nomination Form

**Step 1**  
Nominee Information

- Name of Nominee \_\_\_\_\_
- Title \_\_\_\_\_
- Affiliation \_\_\_\_\_
- Address \_\_\_\_\_
- Province \_\_\_\_\_
- City \_\_\_\_\_
- Postal Code \_\_\_\_\_
- Telephone \_\_\_\_\_
- Fax or Email \_\_\_\_\_

**Step 2**  
Nominator(s) Information

- Name of Nominator \_\_\_\_\_
- Title \_\_\_\_\_
- Affiliation \_\_\_\_\_
- Address \_\_\_\_\_
- Province \_\_\_\_\_
- City \_\_\_\_\_
- Postal Code \_\_\_\_\_
- Telephone \_\_\_\_\_
- Fax or Email \_\_\_\_\_

- Name of Nominator \_\_\_\_\_
- Title \_\_\_\_\_
- Affiliation \_\_\_\_\_
- Address \_\_\_\_\_
- Province \_\_\_\_\_
- City \_\_\_\_\_
- Postal Code \_\_\_\_\_
- Telephone \_\_\_\_\_
- Fax or Email \_\_\_\_\_



2009  
**JOHN F. MCCREARY PRIZE  
FOR INTERPROFESSIONAL TEAMWORK**

**Step 4**

Please complete the following sections.

Submissions are evaluated on these 4 criteria.

**1. Collaboration**

Please list the disciplines that are involved in the initiative and describe their collaboration on the project.

---

---

---

---

---

---

---

**2. Scope**

Briefly describe the scope of the teams' interprofessional activities (no more than 200 words)

---

---

---

---

---

---

---

**3. Innovation**

Briefly describe the level of innovation or excellence of the teams' interprofessional activities (no more than 200 words).

---

---

---

---

---

---

---

**4. Evaluation**

Please provide a brief description of any outcome/impact evaluations that have been done - clinical trials, surveys, etc. (no more than 200 words).

---

---

---

---

---

---

---





2009

## B.C. HEALTH ASSOCIATION LEGACY AWARD



### WHAT IS THE B.C. HEALTH ASSOCIATION LEGACY AWARD

The B.C. Health Association Legacy Award was endowed by the former British Columbia Health Association and is given annually. The College of Health Disciplines will accept nominations for the award, and a committee established for this purpose will decide the winner.

The 2008 BC Health Association Legacy Award was presented to:  
**Jeffrey Riley, Coordinator, Assistive Technology and Seating Service, GF Strong Rehab Centre**

The BC Health Association Legacy Award consists of \$500.00 and will be presented to the representative of a group/ hospital/organization.

### WHO IS ELIGIBLE FOR THE BC HEALTH ASSOCIATION LEGACY AWARD?

The British Columbia Health Association Legacy Award will be given to an individual or group who has made a significant contribution to the development of:

- ♦ Health Policy
- ♦ Health Leadership, or
- ♦ Health Care Governance Province-Wide.

A UBC faculty or a staff member, student, individual or group independent of UBC may be nominated. Previous nominees can be re-nominated. There are no restrictions placed on the winner as to the spending of the award.

### WHAT IS THE DEADLINE FOR SUBMISSION OF NOMINATIONS?

The deadline for submission of nominations is **Noon, Monday, May 25, 2009.**  
(Note: late submissions will not be accepted)

### WHEN WILL THE BC HEALTH ASSOCIATION LEGACY AWARD BE ANNOUNCED?

The winner will be announced in August, 2009.

### HOW TO SUBMIT A NOMINATION

Please ensure that the name of project(s) and nominee(s) are clearly stated.

ONLINE: Complete a nomination form online at <http://www.chd.ubc.ca/legacy/award>

E-MAIL: E-mail completed nomination form(s) to: [chd@interchange.ubc.ca](mailto:chd@interchange.ubc.ca)

FAX: Fax completed nomination form(s) to (604) 822-2495.

MAIL: Mail completed nomination form (available on-line or attached here) to:

**Chair, Awards Committee,  
College of Health Disciplines  
#400 - 2194 Health Sciences Mall  
Vancouver, B.C. V6T 1Z3**

**Note:** Please do not submit attachments, i.e.: DVD's, brochures, binders, reports, etc, as these will not be reviewed.



2009

# B.C. HEALTH ASSOCIATION LEGACY AWARD



## NOMINATION FORM

### Step 1

#### Nominee Information

- Name of Nominee \_\_\_\_\_
- Title \_\_\_\_\_
- Affiliation \_\_\_\_\_
- Address \_\_\_\_\_
- Province \_\_\_\_\_
- City \_\_\_\_\_
- Postal Code \_\_\_\_\_
- Telephone \_\_\_\_\_
- Fax or Email \_\_\_\_\_

### Step 2

#### Nominator(s) Information

- Name of Nominator \_\_\_\_\_
  - Title \_\_\_\_\_
  - Affiliation \_\_\_\_\_
  - Address \_\_\_\_\_
  - Province \_\_\_\_\_
  - City \_\_\_\_\_
  - Postal Code \_\_\_\_\_
  - Telephone \_\_\_\_\_
  - Fax or Email \_\_\_\_\_
- 
- Name of Nominator \_\_\_\_\_
  - Title \_\_\_\_\_
  - Affiliation \_\_\_\_\_
  - Address \_\_\_\_\_
  - Province \_\_\_\_\_
  - City \_\_\_\_\_
  - Postal Code \_\_\_\_\_
  - Telephone \_\_\_\_\_
  - Fax or Email \_\_\_\_\_



## Recipients of

- John F. McCreary Prize
- BC Health Assoc Legacy Award

[www.chd.ubc.ca](http://www.chd.ubc.ca)

Year	John F. McCreary Prize Award Recipients:	John F. McCreary Prize Honourable Mention
2008	Outreach Urban Health, Primary Health Care Facility, Kelowna, B.C.	<ul style="list-style-type: none"> <li>• HPV Vaccine Planning Team, BC Centre for Disease Control</li> <li>• E-Tips for Practice Education, UBC</li> </ul>
2007	Dr. Peter Centre Day Health Clinical Team	<ul style="list-style-type: none"> <li>• Community Health Initiative by University Students (CHIUS)</li> <li>• North Shore Geriatric Outreach Program</li> <li>• Kelowna Outreach Urban Health</li> </ul>
2006	Acquired Brain Injury Program - Outreach Team G.F. Strong Rehabilitation Centre, Vancouver Coastal Health	<ul style="list-style-type: none"> <li>• British Columbia Oral Cancer Prevention Program, BC Cancer Agency</li> <li>• Joint Replacement Access Clinic, Vancouver Coastal Health</li> <li>• NetCARE Program, Home Health Care, Home Health, Fraser Health</li> </ul>
2005	Division of Urology, UBC Prostate Centre at Vancouver General Hospital	<ul style="list-style-type: none"> <li>• BC Children's Hospital, The Cleft Palate/Craniofacial Program</li> <li>• BC Cancer Agency, Family Practice Oncology Preceptor Program</li> <li>• BC Children's Hospital &amp; UBC Dept. of Orthopedics, Pediatric Clubfoot Program</li> </ul>
2004	Department of Medicine, UBC BC Centre for Excellence of HIV/AIDS And Depts. Of Ortho/Surgery and Divs. Of Spine/Neurosurgery, UBC Acute Spine Program	<ul style="list-style-type: none"> <li>• UBC &amp; BC's Children's Hospital, Brighter Smiles Program &amp; Hartley Bay Nursing Station</li> <li>• UBC Faculty of Medicine Community Health Initiative by University Students</li> <li>• BC Centre for Disease Control, Integrating Hepatitis Services in BC</li> <li>• Providence Health Care, Multidisciplinary Pathway for Surgical Patients</li> <li>• Department of Surgery, UBC, Prostate Centre at VGH</li> <li>• Vancouver Community, Vancouver Coastal Spectrum Health</li> </ul>
2003	The Liver Transplant Team of British Columbia Transplant Society BC Women's Hospital and Health Centre. And The Sheway Project	<ul style="list-style-type: none"> <li>• Canuck Place Children's Hospice</li> <li>• ELDERS (Elders Link with Dental Education, Research and Services), Faculty of Dentistry</li> <li>• Geriatric Medicine Team, Mt. Saint Joseph's Hospital</li> <li>• G.F. Strong Rehab Centre Teen Independence Camp</li> <li>• Interdisciplinary Team at the BC Centre for Disease Control and the Canada Michael Smith Genome Sciences Centre</li> <li>• Royal Columbian Hospital's Cardiac Surgery Team: Post-operative Care based on a Wellness Model</li> </ul>
2002	The Quick Response Team Short Term Intervention Services, Victoria Health Unit	<ul style="list-style-type: none"> <li>• Patient Education Videos Production, BC Cancer Agency, Fraser Valley Cancer Centre, Vancouver Island Health Services</li> </ul>
2001	Spinal Cord Program G.F. Strong Rehabilitation Centre Vancouver Hospital & Health Sciences Centre	<ul style="list-style-type: none"> <li>• Richmond Mental Health Outpatient Service, Richmond Health</li> <li>• Amyotrophic Lateral Sclerosis Team, G.F. Strong Rehabilitation, Neuromusculoskeletal Program</li> <li>• B.C. Women's Sexual Assault Service, Children's &amp; Women's Health Centre</li> <li>• Canuck Place Children's Hospice</li> <li>• Comox Valley Chronic Pain Management Team, Comox Valley Nursing Centre,</li> <li>• Diabetes Project Team, Capital Health Region</li> <li>• Multiple Sclerosis Clinic Team, Prince George Regional Hospital</li> </ul>

## Recipients of

- John F. McCreary Prize
- BC Health Assoc Legacy Award

Year	John F. McCreary Prize Award Recipients:	John F. McCreary Prize Honourable Mention
2000	Mary Pack Arthritis Program Vancouver Hospital & Health Sciences Centre	<ul style="list-style-type: none"> <li>• Elder Services Program, Kelowna Mental Health Centre</li> <li>• Enhanced Care Management Program, Fraser Valley Health Region</li> </ul>
1999	Downtown South Community Health Centre	<ul style="list-style-type: none"> <li>• Campbell River/Nootka Community Health Council</li> <li>• Heart Transplant Team, St. Paul's Hospital</li> <li>• Interdisciplinary Dysphagia Management Team, Mount Saint Joseph Hospital</li> <li>• B.C. Paraplegic Association</li> </ul>
1998	Emergency Program Quality Improvement Team Richmond Hospital	<ul style="list-style-type: none"> <li>• Utilization Management &amp; Quality Improvement, Children's &amp; Women's Health Centre of B.C.</li> <li>• Vancouver Island Cancer Centre, B.C. Cancer Agency</li> <li>• Teen Independence Camp, G.F. Strong Rehab Centre</li> <li>• Affiliation &amp; Professional Practicum Program, G.F. Strong Rehab Centre</li> </ul>
1997	Saltspring Island Palliative Care Program Lady Minto Gulf Islands Hospital	<ul style="list-style-type: none"> <li>• Domestic Violence Program, Emergency Department, VGH</li> <li>• The Geriatric Program</li> <li>• The Renal Program, St. Paul's Hospital</li> <li>• The Rhizotomy Program, B.C. Children's Hospital</li> <li>• Vancouver General Hospital Short Term Assessment and Treatment Centre, Interdisciplinary Geriatric Care In Action, VGH</li> </ul>
1996	Brain Injury Community Education Program BC Rehab, G.F. Strong Centre	<ul style="list-style-type: none"> <li>• Palliative Care Program Operating Committee, Burnaby Hospital</li> <li>• The Geriatric Assessment &amp; Treatment Unit, St. Paul's Hospital</li> <li>• Spina Bifida/Meningomyelocele Clinic, B.C. Children's Hospital</li> <li>• Toxoplasma Investigation Team, Department of Medicine Division of Infectious Diseases, VH&amp;HSC</li> </ul>
1995	Cardiac Sciences Clinical Pathway Team St. Paul's Hospital	
1994	The AIDS Care Team St. Paul's Hospital	

Year	BC Health Association Legacy Award Winners
2008	Jeffery Riley
2007	Charles Armstrong
2006	Tawny Hung Shiu-Kay Hung Richard Lam Mark Ng
2005	Elaine Carty
2004	Not awarded
2003	Not awarded
2002	Patricia Baird
2001	Aubrey Tingle
2000	Lyn Jongbloed
1999	Not awarded
1998	Bob Evans



# CLIENT FEEDBACK

## Land & Building Services

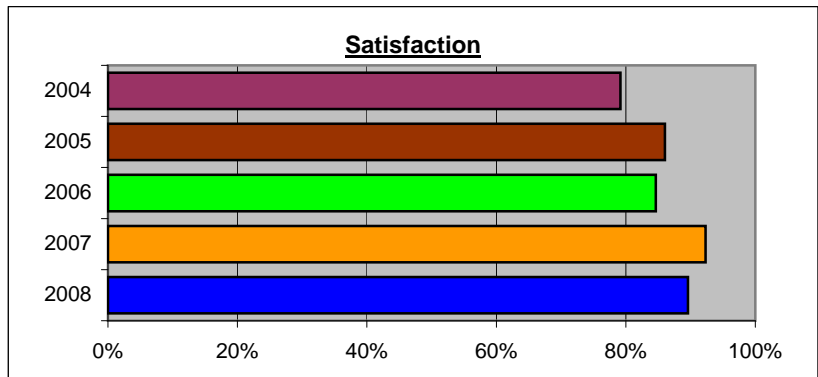
### Plant Operations

### 2004 to 2008 Comparison

#### I. Custodial Operations

	<u>Excellent</u>	<u>Good</u>	<u>Fair</u>	<u>Poor</u>	
1 Timeliness of response from utility workers to burnt-out lights and plugged toilets	15%	52%	21%	13%	2008
	13%	57%	18%	12%	2007
	11%	56%	22%	11%	2006
	8%	56%	21%	15%	2005
	10%	39%	41%	10%	2004
2 Are we meeting your service or cleaning needs?	29%	45%	14%	12%	2008
	30%	42%	20%	8%	2007
	N/A	N/A	N/A	N/A	2006
	N/A	N/A	N/A	N/A	2005
	N/A	N/A	N/A	N/A	2004
3 Is it easy to do business with us?	22%	51%	22%	4%	2008
	23%	46%	28%	3%	2007
	N/A	N/A	N/A	N/A	2006
	N/A	N/A	N/A	N/A	2005
	N/A	N/A	N/A	N/A	2004
4 Timeliness of response to customer requests	15%	52%	22%	11%	2008
	19%	48%	21%	12%	2007
	0%	59%	32%	8%	2006
	9%	44%	37%	9%	2005
	12%	45%	27%	16%	2004
5 Are the Custodial staff and Utility workers responsive?	53%	33%	14%	0%	2008
	43%	42%	14%	2%	2007
	8%	49%	36%	8%	2006
	12%	47%	33%	9%	2005
	20%	41%	24%	14%	2004
6 Are the Custodial staff and Utility workers professional?	57%	30%	13%	0%	2008
	42%	50%	8%	0%	2007
	37%	50%	11%	3%	2006
	37%	47%	12%	5%	2005
	37%	47%	12%	4%	2004

Satisfaction	90%	2008
	92%	2007
	85%	2006
	86%	2005
	79%	2004
Rating	7.5	2008
	7.8	2007
	7.2	2006
	7.5	2005
	6.5	2004





**CLIENT FEEDBACK**  
**Land & Building Services**  
**Plant Operations**  
**2004 to 2008 Comparison**

**II. Building Operations & Maintenance**

	<u>Excellent</u>	<u>Good</u>	<u>Fair</u>	<u>Poor</u>	
1 Timeliness of responses to emergency requests	21%	60%	17%	2%	2008
	14%	61%	16%	9%	2007
	8%	50%	28%	15%	2006
	9%	62%	18%	11%	2005
	15%	60%	19%	6%	2004
2 Timeliness of responses to routine requests	11%	43%	23%	23%	2008
	3%	28%	47%	22%	2007
	3%	28%	48%	23%	2006
	0%	27%	38%	36%	2005
	0%	27%	49%	24%	2004
3 Promptness with which work is carried out	12%	40%	30%	19%	2008
	7%	33%	38%	22%	2007
	0%	21%	51%	28%	2006
	0%	32%	32%	36%	2005
	0%	31%	45%	24%	2004
4 The problem is fixed the first time. Few callbacks	16%	28%	40%	16%	2008
	10%	27%	35%	28%	2007
	0%	30%	43%	28%	2006
	2%	31%	33%	33%	2005
	0%	43%	39%	18%	2004
5 Keeping you informed about progress of repairs	14%	23%	23%	40%	2008
	5%	20%	42%	33%	2007
	5%	28%	28%	38%	2006
	0%	14%	34%	52%	2005
	4%	20%	24%	52%	2004
6 Efforts to minimize disruption (e.g. shutdowns)	19%	56%	23%	2%	2008
	21%	39%	27%	13%	2007
	5%	68%	16%	11%	2006
	7%	48%	26%	19%	2005
	6%	55%	18%	20%	2004
7 Professionalism of maintenance trades staff	21%	57%	19%	2%	2008
	25%	51%	20%	4%	2007
	24%	43%	27%	5%	2006
	21%	52%	26%	0%	2005
	10%	60%	28%	2%	2004



# CLIENT FEEDBACK

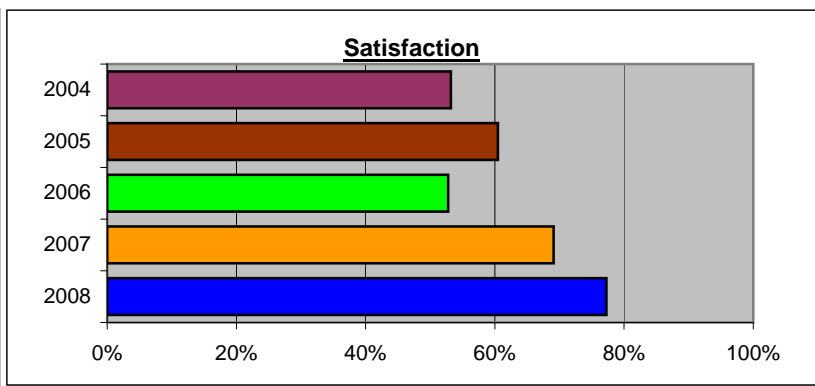
## Land & Building Services Plant Operations

### 2004 to 2008 Comparison

#### II. Building Operations & Maintenance (cont.)

	<u>Excellent</u>	<u>Good</u>	<u>Fair</u>	<u>Poor</u>	
8 Service contract work (ancillary departments)	23%	45%	32%	0%	2008
	N/A	N/A	N/A	N/A	2007
	N/A	N/A	N/A	N/A	2006
	N/A	N/A	N/A	N/A	2005
	N/A	N/A	N/A	N/A	2004

Satisfaction	77%	2008
	69%	2007
	53%	2006
	60%	2005
	53%	2004
Rating	6.6	2008
	6.1	2007
	5.4	2006
	5.7	2005
	5.4	2004







**CLIENT FEEDBACK**  
**Land & Building Services**  
**Plant Operations**  
**2004 to 2008 Comparison**

**III. Municipal & Business Services**

**Landscape & Grounds**

	<u>Excellent</u>	<u>Good</u>	<u>Fair</u>	<u>Poor</u>	
1 Maintenance of campus planting beds and landscape	24%	59%	11%	5%	2008
	24%	52%	17%	7%	2007
	20%	77%	3%	0%	2006
	19%	51%	14%	16%	2005
	15%	70%	8%	8%	2004
2 Maintenance of campus roads and walkways.	15%	51%	26%	8%	2008
	7%	52%	31%	9%	2007
	6%	71%	21%	3%	2006
	11%	53%	22%	14%	2005
	2%	54%	32%	12%	2004
3 Response to burned-out road/pathway lighting	7%	59%	22%	11%	2008
	6%	52%	30%	12%	2007
	4%	72%	20%	4%	2006
	16%	40%	44%	0%	2005
	13%	52%	26%	10%	2004
4 Snow/ice removal from roads, paths and walkways	10%	35%	28%	28%	2008
	2%	52%	21%	25%	2007
	3%	42%	39%	15%	2006
	10%	48%	35%	6%	2005
	10%	46%	28%	15%	2004
5 Efforts to minimize disruptions associated with maintenance as opposed to new constr.	12%	65%	15%	9%	2008
	6%	45%	37%	12%	2007
	3%	53%	37%	7%	2006
	6%	45%	39%	9%	2005
	2%	56%	28%	14%	2004
6 Professionalism of landscaping staff	21%	68%	9%	3%	2008
	21%	60%	16%	2%	2007
	27%	70%	3%	0%	2006
	14%	76%	7%	3%	2005
	13%	76%	8%	3%	2004



# CLIENT FEEDBACK

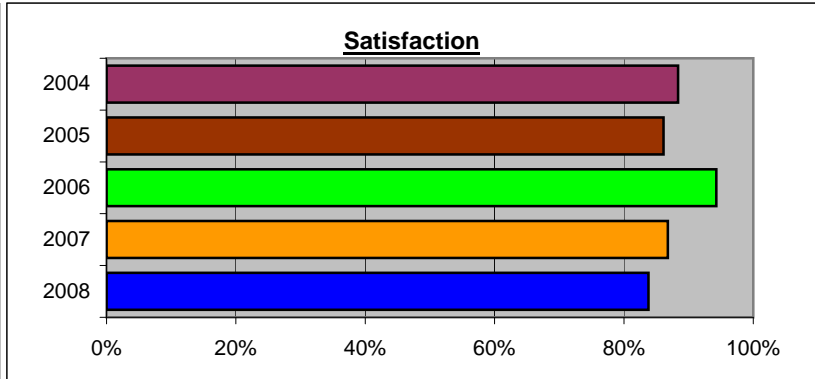
## Land & Building Services Plant Operations

### 2004 to 2008 Comparison

#### Landscape & Grounds (cont.)

[Excellent](#)    [Good](#)    [Fair](#)    [Poor](#)

Satisfaction	<b>84%</b>	2008
	<b>87%</b>	2007
	<b>94%</b>	2006
	<b>86%</b>	2005
	<b>88%</b>	2004
Rating	<b>7.0</b>	2008
	<b>7.0</b>	2007
	<b>7.6</b>	2006
	<b>6.8</b>	2005
	<b>6.9</b>	2006





**CLIENT FEEDBACK**  
**Land & Building Services**  
**Plant Operations**  
**2004 to 2008 Comparison**

**III. Municipal & Business Services**

**Waste Management & Dispatch Services**

	<u>Excellent</u>	<u>Good</u>	<u>Fair</u>	<u>Poor</u>	
1 Garbage collection services	24%	64%	7%	5%	2008
	16%	76%	5%	2%	2007
	6%	65%	24%	6%	2006
	12%	68%	15%	6%	2005
	7%	71%	20%	2%	2004
2 Recycling collection services	29%	52%	12%	7%	2008
	20%	61%	9%	11%	2007
	8%	61%	28%	3%	2006
	11%	64%	19%	6%	2005
	7%	58%	31%	4%	2004
3 Confidential paper shredding service	12%	60%	16%	12%	2008
	25%	50%	18%	8%	2007
	4%	52%	37%	7%	2006
	5%	76%	14%	5%	2005
	14%	64%	18%	5%	2004
4 Grounds litter collection	18%	51%	21%	10%	2008
	15%	33%	33%	19%	2007
	3%	41%	41%	16%	2006
	6%	49%	37%	9%	2005
	5%	49%	29%	17%	2004
5 Response to special pickup requests	13%	55%	19%	13%	2008
	17%	57%	17%	10%	2007
	4%	52%	37%	7%	2006
	7%	63%	26%	4%	2005
	7%	68%	17%	7%	2004
6 Dispatch pickup and delivery services	18%	71%	7%	4%	2008
	23%	49%	21%	8%	2007
	8%	54%	38%	0%	2006
	14%	61%	25%	0%	2005
	13%	66%	16%	5%	2004



# CLIENT FEEDBACK

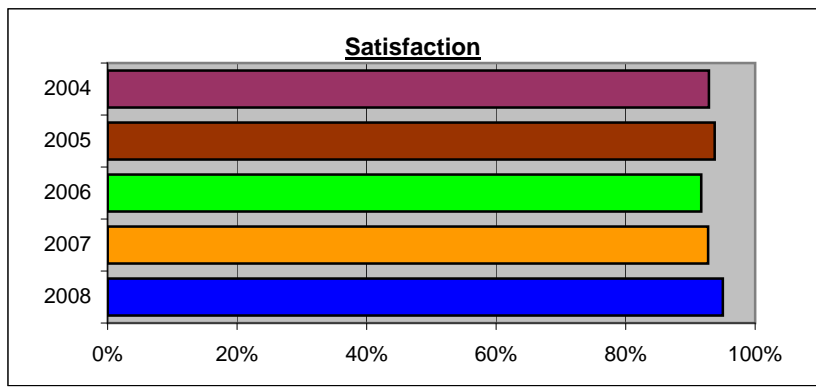
## Land & Building Services Plant Operations

### 2004 to 2008 Comparison

#### Waste Management & Dispatch Services (cont.)

	<u>Excellent</u>	<u>Good</u>	<u>Fair</u>	<u>Poor</u>	
7 Professionalism of Plant Operations service vehicle drivers	17%	69%	11%	3%	2008
	24%	61%	12%	2%	2007
	13%	47%	38%	3%	2006
	21%	65%	15%	0%	2005
	7%	66%	27%	0%	2004

Satisfaction	95%	2008
	93%	2007
	92%	2006
	94%	2005
	93%	2004
Rating	7.4	2008
	7.0	2007
	6.8	2006
	7.2	2005
	6.8	2004





# CLIENT FEEDBACK

## Land & Building Services Plant Operations

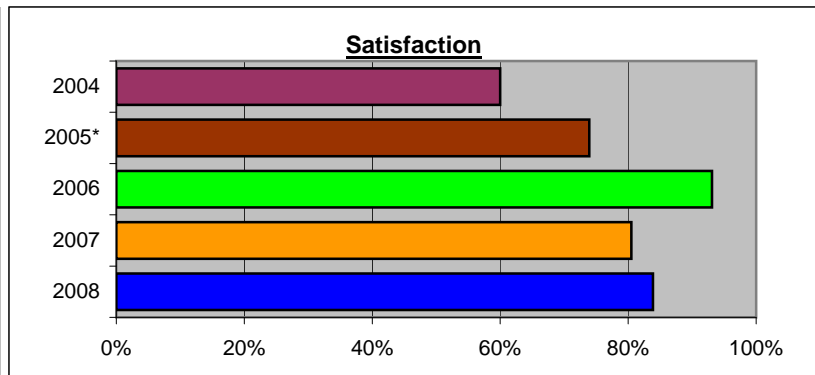
### 2004 to 2008 Comparison

### III. Municipal & Business Services

#### Moving Services

	<u>Excellent</u>	<u>Good</u>	<u>Fair</u>	<u>Poor</u>	
1 Timely response to move requests	26%	48%	16%	10%	2008
	21%	44%	26%	9%	2007
	3%	55%	42%	0%	2006
	4%	57%	30%	9%	2005
	6%	54%	23%	17%	2004
2 Professionalism of moving services staff	34%	52%	7%	7%	2008
	30%	53%	14%	2%	2007
	3%	60%	33%	3%	2006
	13%	67%	21%	0%	2005
	11%	49%	23%	17%	2004
3 Satisfaction of moving costs	28%	28%	28%	17%	2008
	5%	35%	33%	28%	2007
	0%	27%	40%	33%	2006
	0%	25%	35%	40%	2005
	0%	21%	32%	47%	2004
4 Staff helpful & understanding of your moving needs	34%	52%	7%	7%	2008
	32%	44%	12%	12%	2007
	10%	55%	35%	0%	2006
	N/A	N/A	N/A	N/A	2005
	N/A	N/A	N/A	N/A	2004

Satisfaction	84%	2008
	80%	2007
	93%	2006
	74%	2005*
	60%	2004
Rating	7.1	2008
	6.7	2007
	6.4	2006
	6.1	2005*
	5.8	2004



\* Note: Moving was combined with Construction Office in 2005



**CLIENT FEEDBACK**  
**Land & Building Services**  
**Plant Operations**  
**2004 to 2008 Comparison**

**IV. Construction Office**

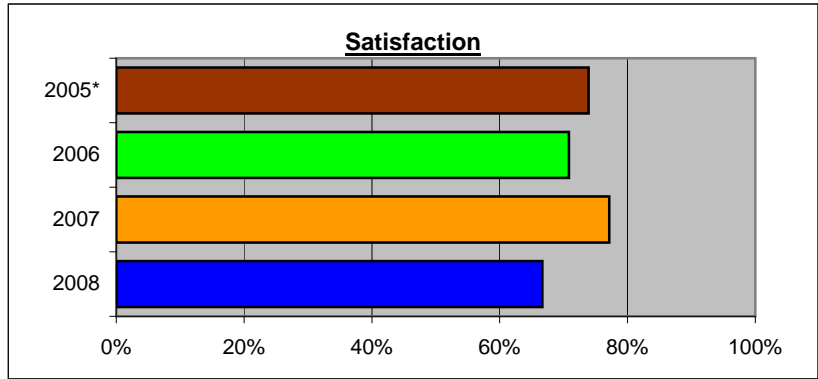
	<u>Excellent</u>	<u>Good</u>	<u>Fair</u>	<u>Poor</u>	
1 Timely response to construction work requests	19%	27%	31%	23%	2008
	8%	44%	25%	22%	2007
	13%	26%	43%	17%	2006
	0%	36%	50%	14%	2005
	N/A	N/A	N/A	N/A	2004
2 Staff helpful & understanding of your construction needs	31%	31%	23%	15%	2008
	14%	54%	23%	9%	2007
	17%	52%	26%	4%	2006
	9%	55%	27%	9%	2005
	N/A	N/A	N/A	N/A	2004
3 Construction work started in a timely manner	23%	19%	27%	31%	2008
	9%	21%	30%	39%	2007
	5%	41%	36%	18%	2006
	0%	45%	36%	18%	2005
	N/A	N/A	N/A	N/A	2004
4 Construction work completed in a timely manner	24%	20%	28%	28%	2008
	6%	34%	28%	31%	2007
	0%	43%	24%	33%	2006
	0%	36%	45%	18%	2005
	N/A	N/A	N/A	N/A	2004
5 Professionalism of construction office staff	42%	27%	23%	8%	2008
	18%	56%	21%	6%	2007
	30%	52%	9%	9%	2006
	14%	71%	10%	5%	2005
	N/A	N/A	N/A	N/A	2004
6 Satisfaction of construction project costs	20%	28%	28%	24%	2008
	6%	15%	45%	33%	2007
	0%	28%	39%	33%	2006
	0%	40%	20%	40%	2005
	N/A	N/A	N/A	N/A	2004



**CLIENT FEEDBACK**  
**Land & Building Services**  
**Plant Operations**  
**2004 to 2008 Comparison**

**IV. Construction Office (cont.)**

Satisfaction	<b>67%</b>	2008
	<b>77%</b>	2007
	<b>71%</b>	2006
	<b>74%</b>	2005*
		2004
Rating	<b>6.5</b>	2008
	<b>6.0</b>	2007
	<b>6.0</b>	2006
	<b>6.1</b>	2005*
	<b>6.1</b>	2004



\* Note: Moving was combined with Construction Office in 2005



**CLIENT FEEDBACK**  
**Land & Building Services**  
**Plant Operations**  
**2004 to 2008 Comparison**

**V. Project Services - Renovation Projects**

	<u>Excellent</u>	<u>Good</u>	<u>Fair</u>	<u>Poor</u>	
1 Ease of submitting request	21%	58%	13%	8%	2008
	15%	65%	15%	4%	2007
	16%	53%	16%	16%	2006
	0%	75%	25%	0%	2005
	13%	58%	23%	8%	2004
2 Response to request	17%	50%	17%	17%	2008
	12%	42%	27%	19%	2007
	11%	58%	16%	16%	2006
	0%	55%	45%	0%	2005
	5%	25%	48%	23%	2004
3 Understanding your needs and requirements	17%	46%	29%	8%	2008
	22%	48%	11%	19%	2007
	17%	44%	33%	6%	2006
	6%	72%	22%	0%	2005
	8%	51%	26%	15%	2004
4 Quality of work meets your expectations	17%	50%	25%	8%	2008
	12%	58%	27%	4%	2007
	11%	42%	32%	16%	2006
	0%	72%	22%	6%	2005
	N/A	N/A	N/A	N/A	2004
5 Work completed in a timely manner	13%	30%	35%	22%	2008
	4%	54%	19%	23%	2007
	11%	42%	32%	16%	2006
	0%	42%	42%	16%	2005
	5%	29%	34%	32%	2004
6 Professionalism of staff	30%	48%	22%	0%	2008
	27%	54%	19%	0%	2007
	25%	50%	25%	0%	2006
	5%	79%	11%	5%	2005
	13%	58%	28%	3%	2004
7 Satisfaction of project cost	13%	17%	39%	30%	2008
	4%	33%	44%	19%	2007
	16%	26%	16%	42%	2006
	0%	19%	50%	31%	2005
	3%	15%	15%	68%	2004





# CLIENT FEEDBACK

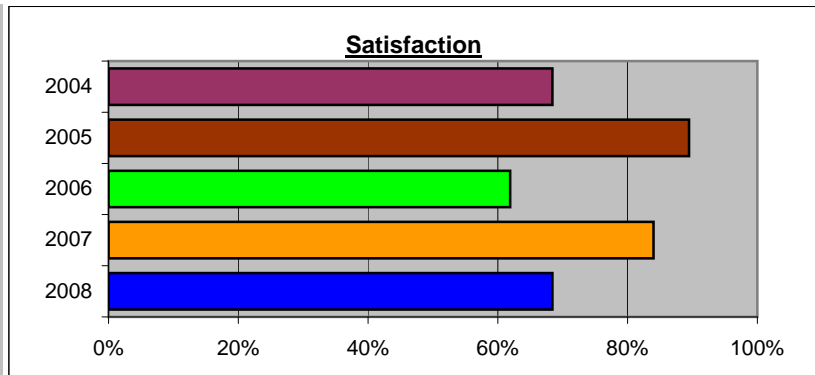
## Land & Building Services Plant Operations

### 2004 to 2008 Comparison

#### V. Project Services - Renovation Projects (cont.)

	<u>Excellent</u>	<u>Good</u>	<u>Fair</u>	<u>Poor</u>	
8 Satisfaction with renovations > \$1M	17%	67%	0%	17%	2008
	15%	31%	31%	23%	2007
	0%	67%	0%	33%	2006
	0%	50%	50%	0%	2005
	N/A	N/A	N/A	N/A	2004
9 Satisfaction with renovations from \$250K to \$1M	9%	55%	27%	9%	2008
	21%	36%	29%	14%	2007
	11%	44%	22%	22%	2006
	0%	60%	40%	0%	2005
	N/A	N/A	N/A	N/A	2004
10 Satisfaction with renovations from \$100K to \$250K	23%	54%	8%	15%	2008
	21%	42%	21%	16%	2007
	10%	60%	10%	20%	2006
	0%	60%	40%	0%	2005
	N/A	N/A	N/A	N/A	2004

Satisfaction	68%	2008
	84%	2007
	62%	2006
	89%	2005
	68%	2004
Rating	6.9	2008
	6.5	2007
	6.3	2006
	6.5	2005
	5.6	2004



## HLSC-101-091

# Prevention of and Recovery from Eating Disorders/Disordered Eating (PREDE)

A DISTANCE ONLINE CERTIFICATE COURSE  
from DOUGLAS COLLEGE CONTINUING EDUCATION

### Course Rationale

This course provides you the opportunity to receive training that is specific to your profession - in the prevention and management of eating disorders and disordered eating.

Your learning objectives and formulative learning exercises are **specific** to your professional. The professional categories are:

- **Researcher/student**
- **Recreation therapist/occupational therapist/exercise therapist**
- **Psychologist**
- **Psychiatrist**
- **Physician**
- **Pharmacist**
- **Pastoral care worker,**
- **Nurse**
- **Mental health worker**
- **Family therapist/social worker**
- **Dietitian**

Learn or refresh your theoretical understanding of the prevention and management of disordered eating and eating disorders.

Several **methods of learning** are available to you:

- read the course **textbook** or
- read the specially prepared **online materials** with associated photographs and illustrations.
- **watch web-based lectures** on more than 20 key learning topics when and how often you want
- **Ask questions** through the website,
- Set up a **live discussion** time through the website
- Join **chat groups** or **discussion groups** with your professional group or with a wide audience of learners.

Meet health care professionals interested in eating disorders and disordered eating from different geographic, social, cultural, economic, and experiential backgrounds

Those taking the course will bring a variety of experiential viewpoints. They may be individuals currently working in the field of disordered eating or mental health who wish to validate and strengthen their skills and knowledge base - and acquire a credential in eating disorders. They may be considering a profession in the field of eating disorders or they may be interested from a personal perspective in gaining greater understanding.

### Course Description

**PREDE** consists of eight modules and four learning outcomes and is provided through the blackboard learning system on the internet

This on-line course is structured to sequentially answer the following questions:

- What is general prevention?

- How is disordered eating identified and managed?
- What are the definitions and epidemiology of eating disorders and how are they applied?
- What are the behavioral disorders associated with anorexia nervosa and bulimia nervosa?
- Why is a team approach critical to prevention and treatment and what strategies can help it work?
- What are the roles of different health care professions in the treatment of eating disorders?
- How is it best to conduct the history, physical examination, and investigations?
- What are the medical manifestations and what is their significance to prevention and treatment?
- Why do clinicians vary so much in their response to common physical complaints?

## Course Outcomes

Upon completion of **PREDE**, participants will have the knowledge necessary to critically evaluate:

- I. Prevention and identification of disordered eating and eating disorders. With emphasis on person centered practice and methods of intervention.
- II. A comprehensive understanding clinically and epidemiologically of the meaning of eating disorders and disordered eating.
- III. The clinical and laboratory manifestations of disordered eating and eating disorders.
- IV. The management and treatment of eating disorders

## Pre-requisites

- University undergraduate degree, professional designation or college equivalency
- Grade 12 with a grade of or LPI with a score of 4 or higher or equivalent (see Douglas College General Admission Requirements)
- Students are expected to be competent in English, both written and conversational.
- Proficiency in research and downloading articles from the internet will be required. Understanding of blackboard for distance education is an asset.

## Required Texts

Birmingham CL, & Beumont P. (2004). *Medical Management of Eating Disorders: A Practical Handbook for Healthcare Professionals*. Cambridge, UK: Cambridge University Press.2004

## Course Evaluation Components

**PREDE** is a certificate course at Douglas College. This means that evaluative components are required.



FEBRUARY 2009

## Call for Nominations: The Gerhard Herzberg Canada Gold Medal for Science and Engineering

I would like to take this opportunity to invite you to nominate a candidate for the Natural Sciences and Engineering Research Council of Canada's (NSERC) **Gerhard Herzberg Canada Gold Medal for Science and Engineering**.

The deadline for nominations is **May 1, 2009**.

All natural sciences and engineering researchers in Canadian universities and in government or corporate research laboratories are eligible to be nominated. Awarded to one individual each year, the NSERC Herzberg Medal – Canada's most prestigious science and engineering prize – recognizes researchers who are characterized by both excellence and influence, two qualities that defined Dr. Herzberg's illustrious career.

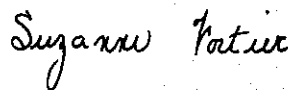
A brochure about the award is enclosed for your reference. Please refer to NSERC's Web site for more detailed information and for instructions on how to prepare a nomination:  
[www.nserc-crsng.gc.ca/en/herzberg](http://www.nserc-crsng.gc.ca/en/herzberg).

You can contact us at **613-995-5829** or at [inquiries.herzberg@nserc-crsng.gc.ca](mailto:inquiries.herzberg@nserc-crsng.gc.ca).

This award is meant to celebrate our country's most outstanding scientists and engineers and to raise public awareness about the major contributions that these top researchers make to international science and technology and to the quality of life of Canadian citizens.

I look forward to receiving a nomination from your institution.

Sincerely,



**SUZANNE FORTIER**  
PRESIDENT, NSERC

Faculty of Medicine  
**Post-Doctoral Fellow  
Professional Development Series**

**Survival Skills for Post Docs:  
The People Side of Achieving Success**

**Part 1: Creative Approaches to Conflict (Mar 31)**

**Part 2: Collaboration and Courage (Apr 2)**

Tuesday, March 31<sup>st</sup>, 2009 (**Part 1**) + Thursday, April 2<sup>nd</sup>, 2009 (**Part 2**)

8:30 AM – 12:00 PM

(Registration opens 8.00 AM)

Michael Smith Laboratories

#101 – 2185 East Mall, Vancouver, BC

University of British Columbia

You are in a Post Doc role because you have already demonstrated a level of success in your field of scientific research. **But the role itself demands a lot more when it comes to overall career success:** managing day to day activities and personalities in a lab or in your research environment, interacting with students and staff, and having potentially challenging conversations with mentors, faculty or reviewers. This is an opportunity to develop some **critical communication skills** and help **build confidence** when leading teams or managing conflict.

**Facilitators:**

**Sally Halliday, M.A., RCC**

Managing Director, Program Outreach and Counselling Services  
UBC Life & Career Centre

**Elana Brief, PhD**

President, Society for Canadian Women in Science and Technology  
Research Director, Women's Health Research Network

**For further info and to register e-mail: [khaller@medd.med.ubc.ca](mailto:khaller@medd.med.ubc.ca)**

**Registration deadline: Friday, March 27, 2009.**

Space at these workshops is limited, so please do take the time to de-register if you know you won't be able to attend. The two workshops are designed to build on one another, so register for both if you can!



PROVIDENCE HEALTH CARE  
Research Institute

Vancouver  
Coastal Health  
Research Institute  
*Healthier lives through discovery*



We are very pleased to announce that NSERC is once again offering the Collaborative Research and Training Experience (CREATE) Program. Funding of up to \$1,650,000 will be provided by NSERC for a total period of six years .

The purpose of the CREATE Program is to support the training of teams of outstanding students and postdoctoral fellows from Canada and abroad through the development of innovative training programs that encourage collaborative and integrative approaches, and address significant scientific challenges associated to Canada's research priorities, and facilitate the transition of new researchers from trainees to productive employees in the Canadian workforce. Please see

[http://www.nserc-crsng.gc.ca/Professors-Professeurs/Grants-Subs/CREATE-FONCER\\_eng.asp](http://www.nserc-crsng.gc.ca/Professors-Professeurs/Grants-Subs/CREATE-FONCER_eng.asp)

This is the second offering of CREATE from NSERC, and the 2008 results are pending. For the last competition UBC was allowed to forward only 4 Letters of Intent.

The Program Officer at NSERC has advised us that NSERC's deadline for the LOI's would now be moved to May 15 and that their website will be updated next Monday (March 16th) with this information. NSERC will also inform us next week as to how many LOI's UBC will be able to submit.

A UBC Review & Selection Committee is presently being formed to select the LOI's to be forwarded by UBC to NSERC. We shall require an abridged NOI from those who plan to submit to CREATE. Our internal deadline for the NOI's is Monday April 20, 4:00 PM.

Please submit your CREATE abridged NOI to Alison Ariss at ORS, #102-6190 Agronomy Road (TEF III Building) on or before the internal deadline .You can also submit it electronically as an attachment to "Ariss, Alison" <Alison.Ariss@ors.ubc.ca>

The abridged NOI for internal review must be composed of:

NSERC Form 187 Notification of Intent

NSERC Form 100 for the applicant and up to five of the co-applicants.

Two additional pages of text to address the main points of the program mainly :

Merit of the proposed training program

Excellence of the researchers

Program management and long-term sustainability





## **NSERC Collaborative Research and Training Experience Program (CREATE)**

### **“Brown Bag” Information Session**

The Vice President Research Office (Dr. Don Brooks) and the Natural Science and Engineering Research Coordinator (Dr. Rabab Ward) are pleased to invite you to attend an Information Session for the upcoming NSERC CREATE competition. Pam Giberson of the NSERC Pacific Office will lead this Session.

NSERC has launched the second competition for the CREATE program, with a new LOI deadline of May 15<sup>th</sup>, 2009. CREATE funding provides up to \$150,000 in year 1 and up to \$300,000 annually for years two to six.

#### **Information Session Details:**

**DATE: Tuesday, March 24, 2009**

**TIME: 12:00 PM to 1:30 PM**

**LOCATION: BC Gas Conference Room (Room 742), 7<sup>th</sup> Floor, Koerner Library Bldg**

CREATE supports the training of teams of outstanding students and postdoctoral fellows from Canada and abroad through the development of innovative training programs that:

- Encourage collaborative and integrative approaches, and address significant scientific challenges associated to Canada’s research priorities; and,
- Facilitate the transition of new researchers from trainees to productive employees in the Canadian workforce.

These innovative programs will encourage one or more of the following:

- The acquisition and development of important professional skills among students and postdoctoral fellows that complement their qualifications and technical skills;
- Student mobility nationally and internationally between individual universities and between universities and other sectors; and,
- *Interdisciplinary research within the natural sciences and engineering (NSE), or at the interface between the NSE and health and/or the social sciences and humanities.*

The CREATE Program will provide an enriched integrative experience for the next generation of researchers in the NSE, and will help develop the professional and personal skills needed to build capacity within Canada's research community to address significant research challenges.

Please register for the Information Session at [alison.ariss@ors.ubc.ca](mailto:alison.ariss@ors.ubc.ca) on or before March 22<sup>nd</sup>.

Please feel free to bring your own lunch to this “Brown bag” session. Light refreshments will be provided.